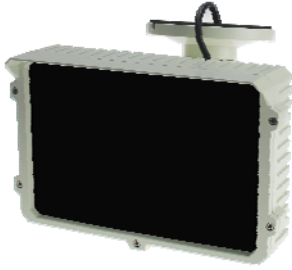


MANUAL



Thanks for using product. This product is the appropriate illuminator. IR led can auto-open when the 1 lux under 10 lux.

SPECIFICATIONS

LED	18 PCS
LED SIZE	SMD5050/42u
POWER	12VDC(+/-10%)/ 2500mA (IR led open)
IR View Distance	130M
Angle	60°
SIZE mm	200(H)*143(L)*88(w)
Weight	1200g
Storage Temp.	-30~ +60°C
Operation Temp.	-10~ +50°C